

State of Wyoming Corner Record

(In compliance with the CORNER PERPETUATION AND FILING ACT, Wyoming Statutes, 1997 Section 33-29-140 et. seq., and the Rules and Regulations of the Board of Professional Engineers and Professional Land Surveyors)

Reverse side of this form may be used if more space is needed.

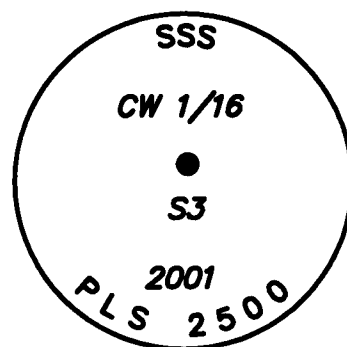
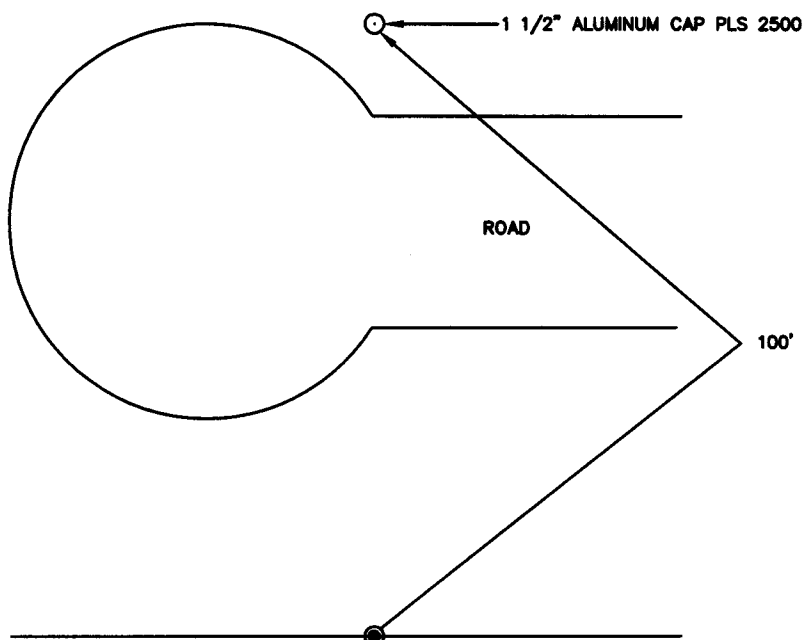
Record of original survey and citation of source of historical information (if corner is lost or obliterated). Description of corner monumentation evidence found and/or monument and accessories established to perpetuate the location of this corner. Sketch of relative location of monument, accessories, and reference points with course and distance to adjacent corner(s) (if determined in this survey). Method and rationale for reestablishment of lost or obliterated corner.

RECORD: UNKNOWN

MONUMENT FOUND: NONE

MONUMENT SET: SET A 2 1/2" ALUMINUM CAP.

REFERENCES: REFERENCES ARE SHOWN BELOW. SEE REVERSE SIDE.



RECP #: 651889

RECORDED 12/23/2014 AT 4:20 PM BK# 2422 PG# 379
Debra K. Lathrop, CLERK OF LARAMIE COUNTY, WY PAGE 1 OF 2

Date of Field Work: 07/12/01

Office Reference: 01142

Monument Inscription

Cross Index Plat

	1	2	3	4	5	6	7	8	9	10	11	12	13	14	15	16	17	18	19	20	21	22	23	24	25
A																									
B																									
C		6		5			4				3						2								
D																									
E																									
F																									
G																									
H																									
J																									
K																									
L																									
M																									
N																									
O																									
P																									
Q																									
R																									
S																									
T																									
U																									
V																									
W																									
X																									
Y																									
Z																									
	1	2	3	4	5	6	7	8	9	10	11	12	13	14	15	16	17	18	19	20	21	22	23	24	25

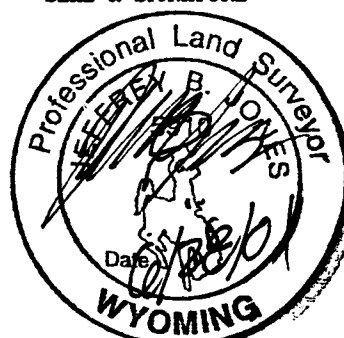
Firm/Agency, Address

STEIL SURVEYING SERVICES LLC
1102 WEST 19th STREET
CHEYENNE WY 82001

Telephone Number: **(307) 634-7273**

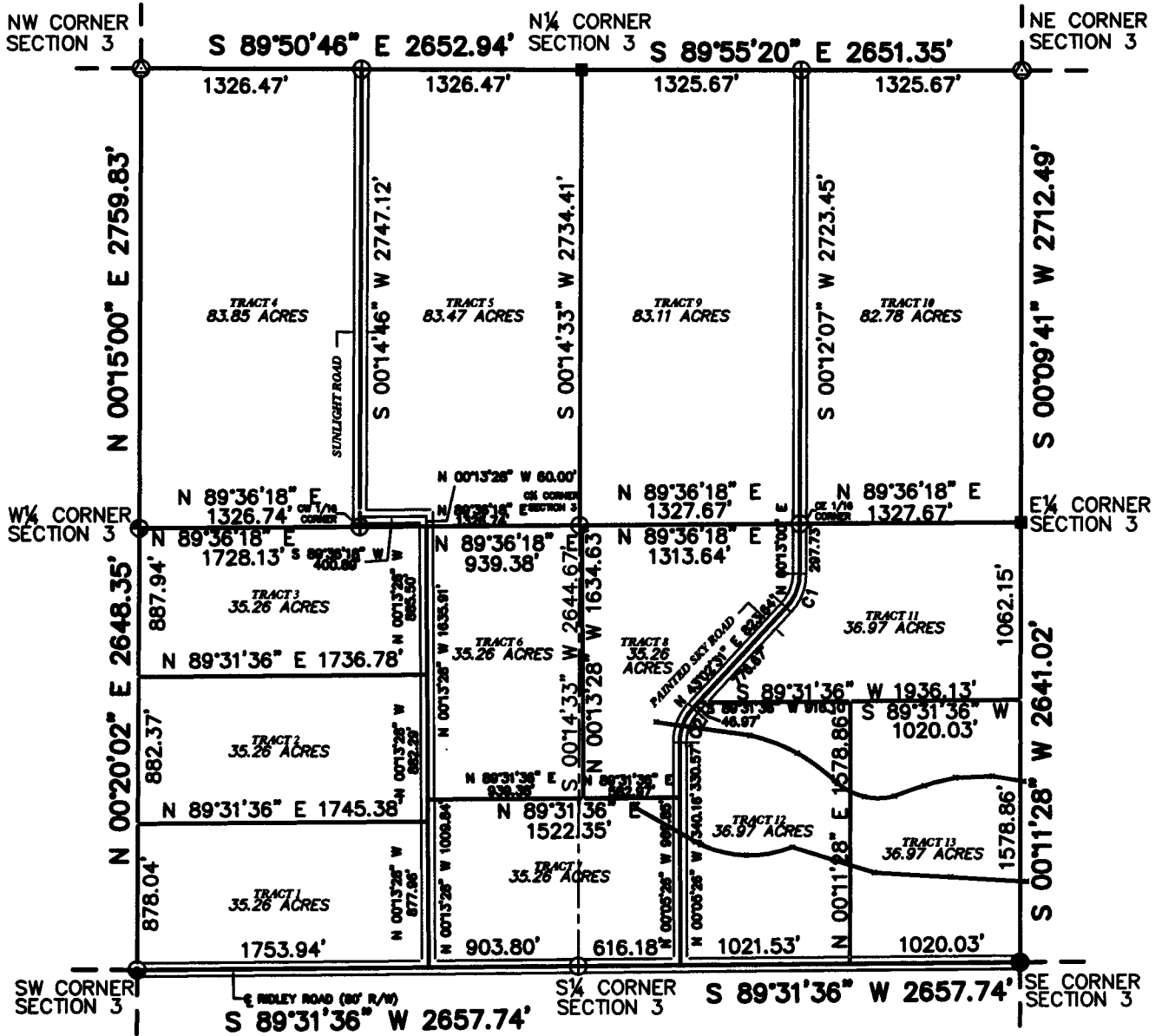
This corner record was prepared by me or under my direction and supervision.

SEAL & SIGNATURE



Corner Name CW 1/16 Corner Section 3, T 15 N, R 67 W, 6th P.M.
County: LARAMIE Wyoming

Cross-Index No.: C-14



LEGEND

- ⊕ SET 5/8" X 24" LONG REBAR WITH 2 1/2" ALUMINUM CAP STAMPED "SSS PLS 2500" AND APPROPRIATE DATA
- ⊙ SET 5/8" X 24" LONG REBAR WITH 3 1/4" ALUMINUM CAP STAMPED "SSS PLS 2500" AND APPROPRIATE DATA
- FOUND GLO STONE
- FOUND 1 1/2" ALUMINUM CAP BLANK
- ⊕ FOUND 2" ALUMINUM CAP STAMPED "LS 2927"
- ⊙ FOUND 5/8" X 24" LONG REBAR WITH 1 1/2" ALUMINUM CAP STAMPED "SSS PLS 2500"



Scale: 1" = 1000'

